

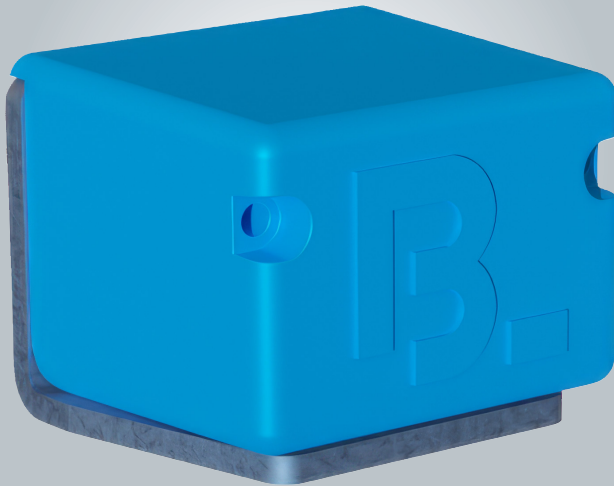


BLUMENBECKER

WE DELIVER SOLUTIONS

DATA SHEET

MESH-GSE LOAD SENSOR



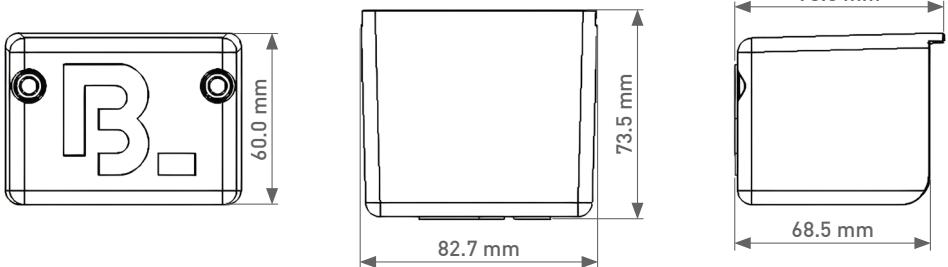
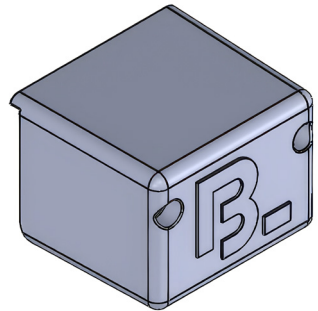
MESH-GSE LOAD SENSOR

THE FUTURE IS MESH

Since 2023 Blumenbecker offers the “MESH load sensor” to transmit the loading/unloading information to the tracking unit via wireless technology. MESH technology has the advantage that many loading sensors (or other devices) communicate with each other (a so-called MESH network), thus significantly improving transmission quality and data security.



- | Capacitive metal detector for ULD detection
- | Wireless 2.4 GHz communication interface
- | NFC interface for wireless identification
- | Battery life: 8–10 years (as mesh endpoint)
- | Load detection in all weather conditions
- | Measuring range: 1–38 mm
- | Temperature range: -20 to 40° Celsius
- | Protection rating IP68



Blumenbecker Technik GmbH

Bahnhofstraße 11b, 06246 Bad Lauchstädt, Germany

www.gse.blumenbecker.com